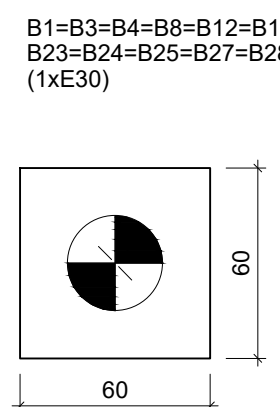
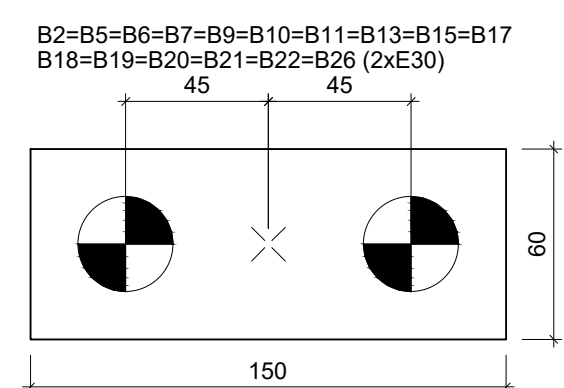
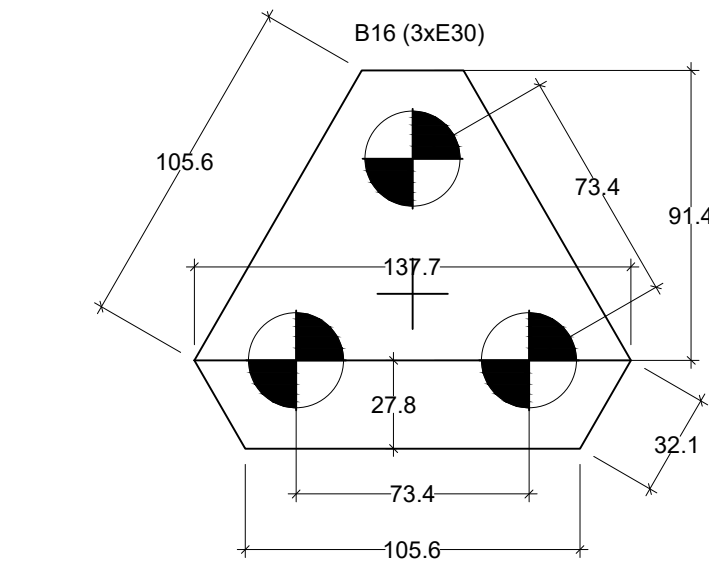
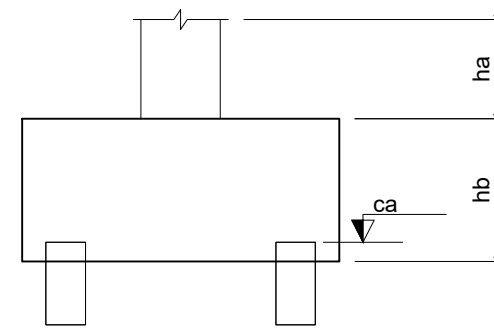
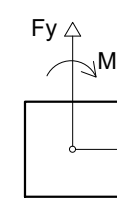


Nome	Seção (cm)	X (cm)	Y (cm)	Carga Máx. (tf)	Carga Mín. (tf)	Pilar		My Máximo (kgf.m)	Fx Máximo (tf)		Fy Máximo (tf)	
						Positivo	Negativo		Positivo	Negativo	Positivo	Negativo
E1	-	340.98	1013.01	2.8	2.8	200	-200	0	-400	0.3	0.0	0.1
E2	-	340.98	382.01	3.3	3.1	200	-100	0	-300	0.3	0.0	0.3
E3	-	799.02	888.99	2.1	1.9	100	0	0	-600	0.0	-2.0	0.1
P1	14x30	-749.87	1192.51	7.8	7.3	0	-200	0	-600	0.0	-1.3	0.6
P2	14x30	-223.87	1192.51	12.1	11.2	0	-200	400	0	0.8	0.0	0.6
P3	14x30	116.13	1192.51	7.8	7.2	0	-600	300	-300	0.5	-0.1	0.8
P4	14x30	332.98	1192.51	4.4	3.6	0	0	-200	-300	0.3	-0.2	0.1
P5	14x30	-757.37	832.51	8.5	7.6	100	-200	100	0	0.2	0.0	0.3
P6	14x30	-213.37	832.51	14.2	12.4	200	0	100	-500	0.0	-0.9	0.0
P7	14x30	116.13	832.51	8.7	8.0	300	0	600	0	1.1	0.0	0.0
P8	14x30	332.98	832.51	6.8	6.2	0	0	300	0	0.4	0.0	0.2
P9	30x30	-749.37	585.56	11.6	10.5	100	-300	0	-600	0.0	-1.6	0.0
P10	30x30	-212.87	585.56	18.2	16.8	0	-800	800	0	1.7	0.0	1.6
P11	14x30	-8.87	577.56	12.8	11.5	0	-100	0	-600	0.0	-1.0	0.4
P12	14x30	340.98	577.56	8.2	7.6	200	0	200	0	0.5	0.0	0.0
P13	14x30	-8.87	180.51	10.0	8.9	400	0	0	-400	0.0	-0.8	0.0
P14	14x30	340.98	180.51	7.3	6.7	100	-200	0	0	0.8	0.0	0.1
P15	30x30	-749.37	-48.03	16.9	15.6	300	-400	0	-700	0.0	-1.5	1.5
P16	30x30	-212.87	-32.05	24.9	22.6	800	-200	700	0	1.6	0.0	0.0
P17	14x30	-8.87	-48.03	11.3	10.4	0	-400	0	-300	0.0	-0.4	0.8
P18	14x30	332.98	-40.05	10.1	9.4	0	-100	300	0	0.8	0.0	0.3
P19	14x30	-8.87	-448.99	11.9	10.9	300	0	0	-300	0.0	-0.6	0.0
P20	14x30	332.98	-440.99	11.6	10.8	200	0	300	0	0.6	0.0	0.0
P21	14x100	-794.37	-653.54	16.8	15.3	600	0	1800	-2800	0.0	-2.4	0.0
P22	14x50	-301.37	-653.54	15.0	13.7	100	-200	500	-300	0.8	0.0	0.1
P23	14x50	-25.87	-653.54	7.1	6.5	100	-200	400	-400	0.3	-0.2	0.1
P24	14x30	-8.87	-796.99	7.9	7.1	100	-200	0	-100	0.0	-0.3	0.5
P25	14x30	332.98	-796.99	6.2	5.6	100	0	300	0	0.8	0.0	0.1
P26	14x60	-301.37	-865.99	11.9	10.8	2000	0	300	0	0.8	0.0	0.0
P27	14x40	4.13	-865.99	9.2	8.7	100	0	300	0	0.3	0.0	0.0
P28	14x100	352.53	-865.99	7.2	6.7	100	0	3000	-300	2.3	0.0	0.0

Os esforços indicados nesta tabela são os valores máximos obtidos pela envoltória de todas as combinações definidas para as fundações. Para análises complementares, deve-se consultar o relatório de esforços na fundação, que apresenta os valores calculados para cada combinação.

Localização no eixo X		Nome
Coordenadas (cm)		
-799.02	E3	
-794.37	P21	
-757.37	P6	
-749.87	P1	
-749.37	P9, P15	
-301.37	P22, P26	
-223.87	P2	
-213.37	P6	
-212.87	P10, P16	
-26.87	P23	
-8.87	P11, P13, P17, P19, P24	
-48.03	P15	
4.13	P27	
-440.99	P20	
-448.99	P19	
-653.54	P21, P22, P23	
-796.99	P24, P25	
-865.99	P26	
-988.99	E3, P27, P28	

Localização no eixo Y		Nome
Coordenadas (cm)		
1192.51	P1, P2, P3, P4	
1013.01	E1	
832.51	P5, P6, P7, P8	
585.56	P9	
577.56	P11, P12	
569.56	P10	
392.01	E2	
180.51	P13, P14	
-32.05	P16	
-40.05	P18	
-48.03	P15	
-48.05	P17	
-440.99	P20	
-448.99	P19	
-653.54	P21, P22, P23	
-796.99	P24, P25	
-865.99	P26	
-988.99	E3, P27, P28	



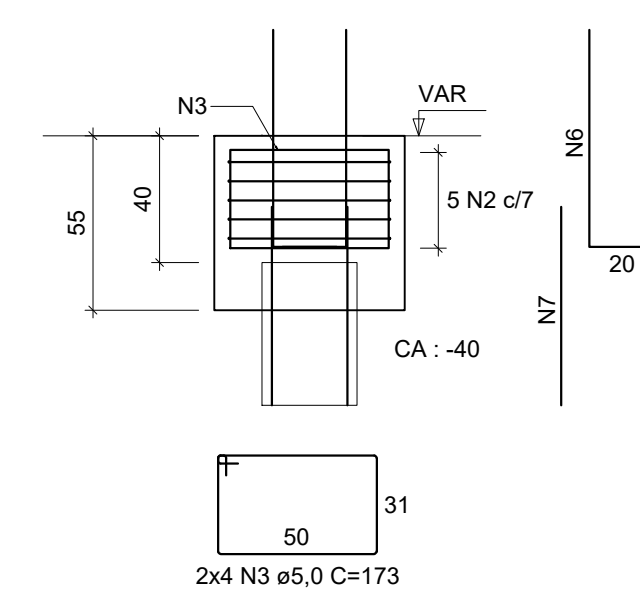
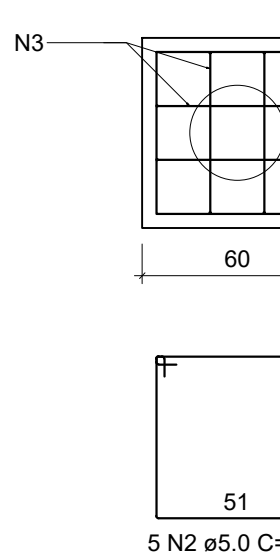
## LEGENDA DOS BLOCOS

Escala 1:25

### B1-BLOCO 01 ESTACA Ø30cm (x1)

P4

PLANTA



### NOTAS:

\* Apoiar e agulhar o fundo da estaca antes da concretagem.

NOTA:

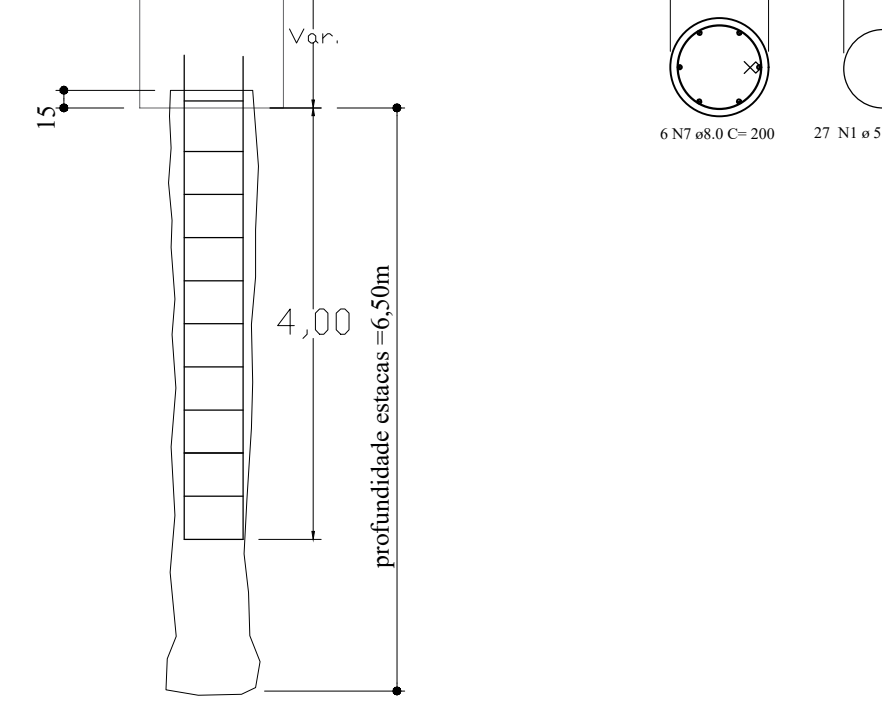
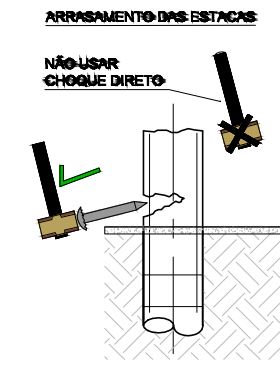
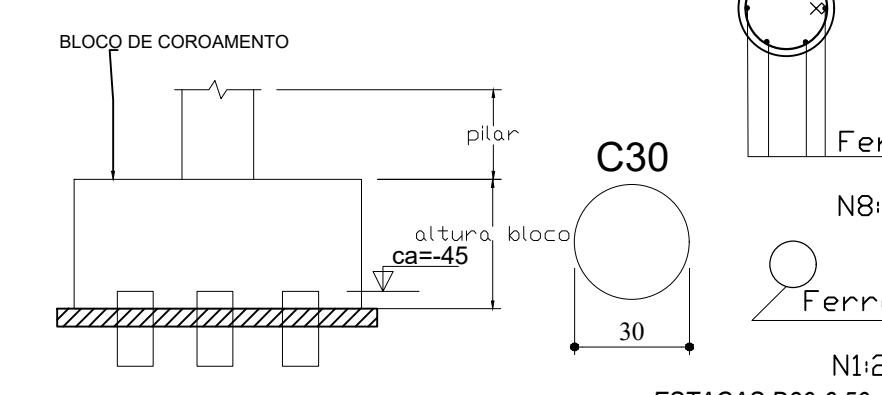
- Fundação desenvolvida conforme laudo de sondagem realizado em 29/04/25;
- INOVA-Engenharia, empresa que realizou o laudo de sondagem do tipo SPT;
- Não foi encontrado o lençol freático;
- Foi considerado uma capacidade de carga média de 1,1 t/m².

# AÇO	COMP. (m)	kg	BARRAS (12,90)
ESTRUTURA			
4.2	-	-	-
5.0	1399.52	247.50	129.9
6.3	138.46	39.50	13.9
8.0	1166.46	514.50	167.9
10.0	17.64	13.00	2.9
12.5	-	-	-
14.0	-	-	-
TOTAL FUNDAÇÃO CA-50		247.50	kg
TOTAL FUNDAÇÃO CA-50		565.00	kg

## DETALHAMENTO DAS ESTACAS Ø 30cm (SOB BLOCOS 03 ESTACAS)

P16 (x1)

Estaca Escavada Mecanicamente  
3 x ESTACAS 30cm /6,50tf;  
Estaca Tipo 3;  
Comprimento Previsto - 6,50m;  
Armação vai até 4,00m.

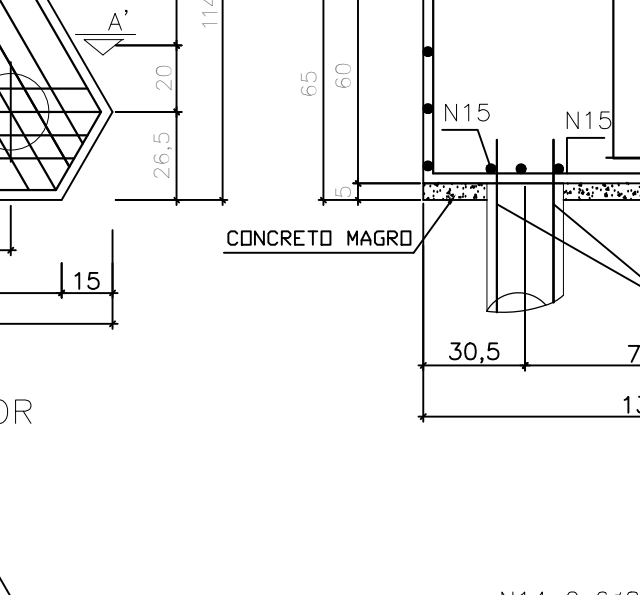
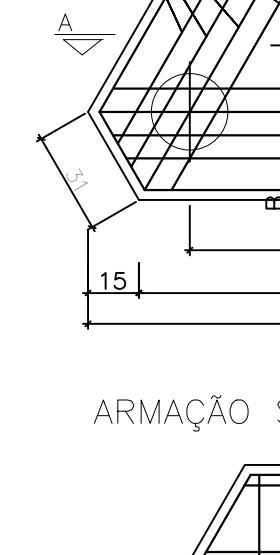


### DETALHE ESTACAS SEM ESCALA

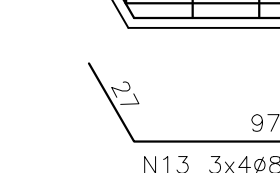
### B3-BLOCO 03 ESTACAS Ø30cm (x1)

P16

PLANTA



ARMAÇÃO SUPERIOR



N13 3x488.0c/14-151

N14 2x668.0c/20-var

N15 3x3810.0-var

N16 2x668.0c/20-var

N17 3x3810.0-var

N18 2x668.0c/20-var

N19 3x3810.0-var

N20 2x668.0c/20-var

N21 3x3810.0-var

N22 2x668.0c/20-var

N23 3x3810.0-var

N24 2x668.0c/20-var

N25 3x3810.0-var

N26 2x668.0c/20-var

N27 3x3810.0-var

N28 2x668.0c/20-var

N29 3x3810.0-var

N30 2x668.0c/20-var

N31 3x3810.0-var

N32 2x668.0c/20-var

N33 3x3810.0-var

N34 2x668.0c/20-var

N35 3x3810.0-var

N36 2x668.0c/20-var

N37 3x3810.0-var

N38 2x668.0c/20-var

N39 3x3810.0-var

N40 2x668.0c/20-var

N41 3x3810.0-var

N42 2x668.0c/20-var

N43 3x3810.0-var

N44 2x668.0c/20-var

N45 3x3810.0-var

N46 2x668.0c/20-var

N47 3x3810.0-var

N48 2x668.0c/20-var

N49 3x3810.0-var

N50 2x668.0c/20-var

N51 3x3810.0-var

N52 2x668.0c/20-var

N53 3x3810.0-var

N54 2x668.0c/20-var

N55 3x3810.0-var

N56 2x668.0c/20-var

N57 3x3810.0-var

N58 2x668.0c/20-var

N59 3x3810.0-var

N60 2x668.0c/20-var

N61 3x3810.0-var

N62 2x668.0c/20-var

N63 3x3810.0-var

N64 2x668.0c/20-var

N65 3x3810.0-var

N66 2x668.0c/20-var

N67 3x3810.0-var

N68 2x668.0c/20-var

N69 3x3810.0-var

N70 2x668.0c/20-var

N71 3x3810.0-var

N72 2x668.0c/20-var

N73 3x3810.0-var

N74 2x668.0c/20-var

N75 3x3810.0-var

N76 2x668.0c/20-var

N77 3x3810.0-var

N78 2x668.0c/20-var

N79 3x3810.0-var

N80 2x668.0c/20-var

N81 3x3810.0-var

N82 2x668.0c/20-var

N83 3x3810.0-var

N84 2x668.0c/20-var

N85 3x3810.0-var

N86 2x668.0c/20-var

N87 3x3810.0-var

N88 2x668.0c/20-var

N89 3x3810.0-var

N90 2x668.0c/20-var

N91 3x3810.0-var

N92 2x668.0c/20-var

N93 3x3810.0-var

N94 2x668.0c/20-var

N95 3x3810.0-var

N96 2x668.0c/20-var

N97 3x3810.0-var

N98 2x668.0c/20-var

N99 3x3810.0-var

N100 2x668.0c/20-var

N101 3x3810.0-var

N102 2x668.0c/20-var

N103 3x3810.0-var

N104 2x668.0c/20-var

N105 3x3810.0-var

N106 2x668.0c/20-var

N107 3x3810.0-var

N108 2x668.0c/20-var

N109 3x3810.0-var

N110 2x668.0c/20-var

N111 3x3810.0-var

N112 2x668.0c/20-var

N113 3x3810.0-var

N114 2x668.0c/20-var

N115 3x3810.0-var

N116 2x668.0c/